



UNIVERSITY OF KENTUCKY

*D r e a m • C h a l l e n g e • S u c c e e d*

COLLEGE OF AGRICULTURE

March 10, 2008

MEMO

To: Dr. Phil Kraemer  
Associate Provost

From: Dr. Mike Mullen  
Associate Dean

Re: Equine Science and Management Degree Program

Attached is a proposal for a new program in Equine Science and Management and five new courses that are part of this program. This program has been over two years in the making. Our Equine Initiative was started in May of 2005, with discussions on how the College could expand how we serve the equine industry throughout the Commonwealth. One clear message from listening sessions, students, and the industry was the need for a comprehensive BS program in Equine Sciences. A multi-departmental committee, with industry representation, was formed in the fall of 2005 to begin forming this proposal:

- Dr. Bob Coleman, Animal and Food Sciences: Chair
- Dr. Lori Garkovich, Community and Leadership Development
- Dr. Laurie Lawrence, Animal and Food Sciences
- Dr. Bill Witt, Plant and Soil Sciences
- Dr. Mary Roseman, Nutrition and Food Sciences (Hospitality Management and Tourism)
- Dr. Leigh Maynard, Agricultural Economics
- Dr. Karen McDowell, Veterinary Sciences
- Mr. Dan Rosenberg, President of Three Chimneys Thoroughbred Farm
- Mr. Norm Luba, Kentucky Quarter Horse Association

This committee met several times from the fall of 2005 through June of 2007. The College of Agriculture Undergraduate Curriculum Committee met on May 2, 2007 to discuss the proposal. The committee agreed at that time to allow the College to offer the Equine program under the Individualized BS degree program for the 2007-08 academic year. The equine curriculum committee then took comments from the May 2 meeting and finished up the formal proposal. The proposal for the curriculum and courses were submitted to the college for consideration on June 29, 2007. The College UG Curriculum Committee then considered the proposal again during the fall of 2007, with full approval on October 31, 2007. After minor corrections, the entire package was made available to the College faculty for 10 days in December. After 10 days and very little input, the proposal was voted on in the affirmative by 4 of 4 faculty who looked it over. Since that time, there have been some delays in getting the new proposal form documentation finished up. That documentation has been completed and is part of this proposal.

---

Office of Academic Programs

N6 Agricultural Science Building North • Lexington, Kentucky 40546-0091

(859) 257-3468

[www.ca.uky.edu/students](http://www.ca.uky.edu/students)

*An Equal Opportunity University*

This is an interdisciplinary program in that several departments will be actively involved in the success of the program. The Animal and Food Science department does provide the lion's share of support, but, Agricultural Economics, Plant and Soil Sciences, Nutrition and Food Science, and Community and Leadership Development are also active in the development and support of the program. Therefore, the forms are signed by Dr. Coleman, who is our official Associate Director for Education in the Equine Initiative, rather than a department chair. This is similar to how the College operates its Ag Biotech and Natural Resources programs, with an interdepartmental steering committee with a chair.

As is outlined in the materials included, this program is already a success. The benefit of testing a program under the Individualized degree program is that we can assess demand and potential success prior to formal approval. With 45 students already in the program, well over 230 inquiries in the past year from potential students, inquiries from New Zealand, Switzerland, and all over the USA, it is clear that there is a strong need and demand for a world-class Equine program at UK. Of the current 45 students, 30 are from out of state. Of the 230+ inquiries, about 140 are from outside Kentucky. Not only will we serve the Commonwealth and its signature agricultural industry, but it also will bring in large numbers of out of state students. This proposal will make us one of the leading equine programs in the country in very short order.

The College of Agriculture looks forward to the approval and official start of this important program. Please keep us informed of its progress and let me know if we can come to a meeting of the UG Council to discuss this with members of the committee.

## UNIVERSITY SENATE ROUTING LOG

**Proposal Title:**

Name/email/phone for proposal contact:

**Instruction:** To facilitate the processing of this proposal please identify the groups or individuals reviewing the proposal, identify a contact person for each entry, provide the consequences of the review (specifically, approval, rejection, no decision and vote outcome, if any) and please attach a copy of any report or memorandum developed with comments on this proposal.

<b>Reviewed by: (Chairs, Directors, Faculty Groups, Faculty Councils, Committees, etc)</b>	<b>Contact person Name (phone/email)</b>	<b>Consequences of Review:</b>	<b>Date of Proposal Review</b>	<b>Review Summary Attached? (yes or no)</b>

## Brothers, Sheila C

---

**From:** Mendiondo, Marta  
**Sent:** Monday, November 17, 2008 12:22 PM  
**To:** Brothers, Sheila C  
**Cc:** Mendiondo, Marta  
**Subject:** Senate Academic Programs Committee Meeting Nov 14th

Sheila,

The Senate Academic Programs Committee approved the following programs, assuming all necessary routing sheets are available:

### BS Equine Science and Management

The other 2 programs were not discussed since the reviewers were unable to complete them.

Please let me know what other programs should be added for the next meeting so I can forward them to the members ASAP.

Tx,  
Marta

*Marta S. Mendiondo, PhD*  
*University of Kentucky College of Public Health - Biostatistics Department*  
*121 Washington Avenue - Suite 201 - Lexington, Kentucky 40536-0003*  
*Sanders Brown Center on Aging*  
*Rm 309B Sanders-Brown Bldg. - 800 S. Limestone St. - Lexington, KY 40536 - 0230*  
*(859) 257-1412 ext 274 - FAX (859) 323-2866*  
[marta@email.uky.edu](mailto:marta@email.uky.edu)

Statement of Confidentiality: The contents of this e-mail message and any attachments are confidential and are intended solely for addressee. The information may also be legally privileged. This transmission is sent in trust, for the sole purpose of delivery to the intended recipient. If you have received this transmission in error, any use, reproduction or dissemination of this transmission is strictly prohibited. If you are not the intended recipient, please immediately notify the sender by reply e-mail or at 859-257-1412 x 241 and delete this message and its attachments, if any.



UNIVERSITY OF KENTUCKY

*Discovery • Challenge • Success*

**PROVOST BUDGET OFFICE**

RECEIVED

OCT 07 08

OFFICE OF THE  
SENATE COUNCIL

October 6, 2008

Dr. David Randall, Chair  
University Senate Council  
201 Main Building  
CAMPUS 0032

Dear Dr. Randall:

I am writing, on behalf of the Provost, concerning the feasibility of the new proposed BS degree in Equine Science and Management in the College of Agriculture. I understand the proposal has been approved by the Undergraduate Council which forwarded its recommendation to the Faculty Senate.

I discussed this with Dr. Mike Mullen, Associate Dean for Academic Programs in the College of Agriculture. The College of Agriculture has made the equine industry a top priority with respect to new programming for the past three years. The Equine industry is the single largest agricultural industry in the state and the College is committed to providing quality programming in research, extension and education. For years, students came to UK and enrolled in the Animal Science BS program and took a small handful of equine related courses. However, there was a demand for more. This demand for the College to be more active in the Equine industry led to the formation of the Equine Initiative in the College in 2005, resulting in much more visible programming related to the horse industry in all mission areas. The College has offered this Equine Science and Management program through the Individualized Degree program in Agriculture this past year, and the result is that there are nearly 120 students already in the program, taking classes and progressing. The demand is real and this program, once fully approved, will be among the top five programs in the country, with a goal of being the best program in the country.

From a resource perspective, the College has planned well for the demand for the degree. The College has reallocated resources to ensure that they can handle the students and provide an exceptional education. Prior to the development of the Equine Initiative, the College had two faculty members in the Department of Animal and Food Sciences teaching the equine class offerings. Since the beginning of the Initiative, the College has hired two more faculty with equine teaching responsibilities in Animal and Food Sciences, is in the process of hiring a lecturer, and hired a new faculty member in the Department of Agricultural Economics to provide equine economics courses. And, the departments of Plant and Soil Sciences and Nutrition and Food Science are ready to accept more students into courses in their programs to make this program a success. The College has also built a new Equine Education Pavilion at the Main Chance Research Farm on the north side of Lexington which is already heavily used for equine courses. Plans are underway for another education building at the Main Chance Farm; College Development personnel are working on fundraising to make that possible.

---

Provost Budget Office  
355 Patterson Office Tower • Lexington, Kentucky 40506-0025  
(859) 257-6499 • fax (859) 257-1797  
[www.uky.edu](http://www.uky.edu)

*An Equal Opportunity University*

Administratively, the addition of this new undergraduate program has been well planned for. The College has the resources necessary to move forward with the program. I am certifying this program as administratively feasible.

Sincerely,

A handwritten signature in black ink, appearing to read "Karen T. Combs". The signature is fluid and cursive, with a long horizontal stroke at the end.

Karen T. Combs

Cc: Kumble Subbaswamy  
Heidi Anderson  
Jeannine Blackwell  
Connie Ray



**Kentucky Council on  
Postsecondary Education**

**Steven L. Beshear**  
Governor

1024 Capital Center Drive, Suite 320  
Frankfort, Kentucky 40601  
Phone: 502-573-1555  
Fax: 502-573-1535  
<http://www.cpe.ky.gov>

**Received**

AUG - 5 2008

**Office of the Provost**

**Richard A. Crofts**  
Interim President

July 28, 2008

Dr. Kumble Subbaswamy  
Provost  
University of Kentucky  
106 Gillis Bldg  
Lexington, KY 40506-0033

Dear Swammy:

The 45-day review period has ended for the Bachelor of Science degree program in Equine Science and Management proposed for the University of Kentucky. Because UK has automatic EEO status for 2008, it is now free to complete its internal processes for reviewing, approving, and implementing this program.

As you implement this program, the Council on Postsecondary Education encourages you to continue the successful collaboration and partnership with the University of Louisville Equine Business program, and the Equine Trust Advisory Committee, providing agriculture/clinical science and business postsecondary education opportunities in the equine industry.

Please inform us when your governing board has taken final action. At that time, we will need from you:

- the date your governing board approved the program
- the institutional title
- the federal taxonomy title
- the Classification of Instructional Program (CIP) code
- the program curriculum

I wish you success in the implementation of this program.

Sincerely,

A handwritten signature in black ink, appearing to read "James L. Applegate".

James L. Applegate  
Vice President for Academic Affairs

## I. REQUEST FOR A NEW PROGRAM

Please Circle One				
Associate	<b>Bachelor</b>	Masters	Doctoral	Professional

Degree Title: BS in Equine Science and Management

Major Title: Equine Science and Management      Option: A: Equine Science, B: Equine Management

Major code:

Primary College: Agriculture

CIP Code: 01.0307

Accrediting Agency (if applicable) N/A

Within the Department, who should be contacted for further information about the proposed program?

Name: Michael Mullen      Email: mike.mullen@uky.edu      Phone: 859 257-3469



BS Degree Program in Equine Science and Management  
College of Agriculture  
University of Kentucky

Narrative Abstract

**Rationale for Program:**

There is high demand for a new, formal degree program in Equine Science and Management to be offered by UK. We are in the heart of the Horse Capital of the World. Approximately 30% of KY economic income is from agricultural sources, and the equine industry statewide is the largest contributor to that income, with an estimated \$4 billion in economic impact to the state. There are at least 320,000 horses in KY, distributed across the state and representing many different breeds. The College of Agriculture has served the equine industry through its research and extension mission for years, but has not provided a formal BS degree program to support the industry beyond an equine option in the Animal Sciences degree. Starting in 2005, we began discussions with the industry state-wide, we listened to students, and we enlisted industry representation to help begin the process of developing a world-class program. In-house surveys of current students in several of our majors indicate that many students are here because of the horse industry, in spite of no formal BS degree specific to horses. This proposal represents the outcome of those discussions and surveys. We have received inquiries from prospective students as far away as Switzerland and New Zealand, as well as all over the US, inquiring about our programs, indicating wide interest. The demand is strong; we currently (2007-08 academic year) have 46 students already "majoring" in Equine through the use of our Individualized Degree program. We are teaching the introductory course as a Special Topic (GEN 109). And, industry representatives in KY are excited about this program and the opportunity to work with UK to enhance the industry. As a result, the College of Agriculture has announced the Equine Initiative which includes expansion of our research and outreach capabilities, the hiring of new faculty to serve equine industries, and the construction of new facilities at our Main Chance Farm for equine education. To date we have hired two new faculty to complement our existing faculty, and a third hire is underway. Facilities for the education mission are under planning and construction, with a new Equine Teaching Pavilion already completed at the UK Main Chance Farm.

Given current enrollment and interest, we expect that this program will provide educational opportunities for 200 or more students at any given time. This will bring significant numbers of students to UK from not only Kentucky, but the entire country and the world. Of the current 46 students, 30 are out of state students. Therefore, this program will serve the needs of KY students and will attract out of state students to UK. We are also mindful of the impact this may have on other programs. We have discussed the program with representatives from the University of Louisville, Morehead State, Midway College, Georgetown College, about the programs. Morehead State has an Animal Science program with an Equine emphasis. Midway College's program emphasizes equitation and training as well as management. Murray State and Western Kentucky University both have Animal Science programs with Equine emphases as well, with course in equitation and horse training. The University of Louisville program is in Equine Business. The UK program will complement that program, but not duplicate it. Indeed,

we are discussing opportunities to share courses via distance learning with UL so that their students can access equine science courses and our students can access business classes oriented towards the equine industry. We have worked hard to be different than those programs. For example, we have no focus on equitation or riding in our program; this is common to the other programs in the state. If students ask about coming here to learn to ride, we inform them of other programs in the state. Our emphasis is solely on a complete education in the science of the horse, coupled with complementary courses in soils, pasture management, and agricultural management.

This degree program meets needs on a state, regional and national level. It also completes the tripartite mission of education, research and extension for the horse industry in the Commonwealth.

### **Statement of Need:**

As discussed in the rationale, the horse industry is the largest agricultural industry in the Commonwealth, responsible for an estimated \$4 billion per year in economic activity. While the UK College of Agriculture has worked to serve the horse industry via research and extension activities in the past, our efforts in the undergraduate education arena have been lacking. We have had an equine emphasis in our Animal Science degree, but it was viewed by many students as not completely serving their needs. Surveys of our freshman class of over 100 students in Animal Science in 2005 showed that approximately 70% had an interest in horses and would consider switching to an equine degree program. We also conducted seven listening sessions throughout the Commonwealth, and in each of these (except for the October 6 meeting with veterinarians), the participants identified a need for UK to offer a strong Equine degree program at the undergraduate level. Summaries of these listening sessions are available at: [http://www.ca.uky.edu/equine/listen\\_session.htm](http://www.ca.uky.edu/equine/listen_session.htm).

### **Plans for Collaboration with Other Institutions:**

As stated above, we plan to collaborate with the University of Louisville on sharing courses via online and other distance means. We want access to equine business courses, and UL will take advantage of equine science courses from UK. We are also discussing the possibility of a 3+2 program with Georgetown College where students at Georgetown would complete three years and then come to UK for two years, resulting in the student receiving a BS from Georgetown and an MS from UK. As other opportunities to collaborate with WKU, Murray, or Morehead come available, we will work to make those a reality.

### **Program Description:**

The proposed BS degree in Equine Science and Management will be a College-level, interdisciplinary degree program administered by a steering committee representing the Departments of Animal and Food Sciences, Agricultural Economics, Plant and Soil Sciences, Nutrition and Food Sciences, and Veterinary Sciences. This program is built on the base of sciences. Every student will take a 19-22 hour pre-major program consisting of math, chemistry,

biology, and economics. The major core, consisting of 28 hours of course work, has 24 hours of equine science requirements and four hours in agricultural enterprise management. Students will choose an option based on their interests. In option A – Equine Science, students will study animal physiology and reproduction, soil sciences, and pasture management. This option is targeted at students intending to work as farm managers or those intending to go to veterinary school upon completion of the degree. In option B – Equine Management, students will take courses in accounting, economics, marketing, and tourism. This option is for those students who want to work in the broader equine industry. All students must also complete an 18 hour Specialty Support program. The student will work with a faculty advisor to choose appropriate courses to allow the student to focus on an area they are interested in, for example they might choose to finish a minor in business or take course work in soil sciences, agricultural economics, political sciences, etc... All students must also complete an internship as part of the program. Students must finish 120 hours of coursework to receive the BS degree.

In summary, the BS degree in Equine Science and Management has the following requirements:

	Equine Science Option A	Equine Management Option B
USP Requirements including the writing requirement but not the hours in the core or option. This includes 6 hours USP electives.	25	25
Pre Major hours	21-22	19-20
College of Agriculture Requirement	3	3
Core Hours	28	28
Option Hours	21	21
Specialty Support	18	18
Free Electives	3-4	5-6
<b>Total for graduation</b>	<b>120</b>	<b>120</b>

A complete copy of the program proposal is attached Part II below.

### **Resources for the Program:**

When we started working on the Equine Initiative in the College of Agriculture, we had two faculty in the department of Animal and Food Sciences working in Equine. Dr. Lawrence is an Equine Nutritionist, and she does research and teaching in equine. Dr. Coleman is an Extension Faculty member who did programming throughout the state and taught a course, but has not turned his attention towards making this program grow. He is serving as an Associate Director of our Equine Initiative and will direct the undergraduate degree program.. Since 2005, we have substantially enhanced our personnel resources. We recently hired two more faculty in our Department of Animal and Food Sciences; Dr. Mary Rossano will teach equine sciences and do research on equine health issues and Dr. Carmen Fernando will teach equine courses and assume

responsibility for extension youth programming in the state, allowing Dr. Coleman to assume a greater role in the academic program. We also have hired a new faculty member in Agricultural Economics, Dr. Jill Stowe. She will teach courses related to the equine economy and provide research on the industry. Additionally, the Department of Plant and Soil Sciences has shifted considerable resources towards the equine program in extension and is ready to provide soil science and pasture management courses for equine students. Finally, two faculty in the Department of Nutrition and Food Science, Drs. Sunny Ham and Mary Roseman, are committed to educational programming focusing on the hospitality and tourism industries and how they are impacted by the equine industry. We have created the Equine Initiative in our College, with physical office space in Room 212 Agricultural Science Bldg on the Agricultural Campus of UK and a website to act as a portal for all things equine can be found at: <http://www.ca.uky.edu/equine/>. This office is staffed with an assistant to carry on day to day business, including student contacts and questions, and a communications director. We also are in the process of bringing in a faculty Director of the Equine Initiative, who will work with Dr. Coleman to make sure our programs are running smoothly. We have also used our resources to build an Equine Teaching Pavilion at the Maine Chance Farm north of Lexington. This is being used primarily for teaching course labs with horses. Finally, we are raising funds to build a new classroom and outreach facility at the Maine Chance Farm to further enhance our program (see facilities prospectus in the appendix). Clearly, we have created the resources to carry out this program in a high quality fashion.

## Academic Program Approval Checklist

01. Are more Kentuckians ready for post-secondary education?
  - a. Entrance Requirements  
Students who qualify for entrance to UK are allowed to enter this program.
  - b. Transfer Requirements  
Students must meet the requirements for the degree program if they transfer from another College at UK or a separate institution. Coursework from other institutions will be evaluated by College and Equine program advisors to determine what credits may apply.
  - c. Recruitment Plans  
The College of Agriculture has a very active recruitment program, which recruits for all majors, including Equine Sciences. Word of mouth throughout the equine community has resulted in a great deal of interest already, with 45 students already here taking current equine coursework.
  
02. Are more students enrolling?
  - a. Demand for program  
We have 45 students already taking course work in Equine Science and Management. Right now, they are pursuing a general BS in agriculture and will switch to the Equine program on approval. Based on these numbers, traffic coming to UK for visits, and inquiries from all over the US, we anticipate at least 200 students will be enrolled in this degree program annually with at least 30 to 40 graduates annually. We anticipate that some of this 200 will come from students who would have enrolled in our animal science program. However, since 30 of the current 45 are from out of state, we also believe that as many as 100 or more will be new students to the College, many from beyond the borders of Kentucky.
  - b. Recruitment plans  
We will recruit by being visible. Kiosks at horse events, such as the 2010 World Equestrian Games, will reach a large audience who visit the Bluegrass each year for horses. Our web sites will provide information on the Equine Program. We will be visible at all Preview Nights throughout KY, which we already do. We also attend national FFA conventions where we talk to hundreds of potential students about all of our programs.  
  
To date, we have done almost no active advertising of our programs. Word of mouth and a 2006 press conference about the Equine Initiative in the College (research, extension and teaching) has resulted in high interest. The program is currently recruiting for itself. During 2007, we have had 226 requests for information on Equine Science undergraduate programming from students graduating high school in either 2008 or 2009. Of these, 138 students were from out of state. And the UK visitor center indicates that they get inquiries on nearly

a daily basis asking about equine programming. There is a clear demand for this program.

- c. EEO Plan and Status?
03. Are more students advancing through the system?
- a. Anticipated time to graduation. We anticipate that most students will graduate within a five-year time frame. College of Agriculture curricula have recently been reduced to 120 total credits for the BS (with some exceptions). This program requires 120 credit hours and most students should be able to finish easily within five years. However, many students are working to help pay their way to school, resulting in residence time exceeding four years for many students. And, any student transferring in from a very dissimilar program should expect that more time will be required to take required premajor and major courses that they have not taken in their previous degree or at their previous institution.
  - b. Practicum Experience.  
Each student graduating with a BS in Equine Science and Management will be required to complete an internship prior to graduation. This will result in every student gaining real experience in the equine industry prior to graduation. The student will receive at least three credits in EQM 399 – Equine Internship.
  - c. Why do we desire to offer this program? Why is UK the right place to offer this program?  
We are the land-grant College of Agriculture in the heart of the Bluegrass, the Horse capital of the World. We already do world-class equine research in our departments of Veterinary Science, Animal and Food Science, and the Gluck Equine Center. And, we have provided Extension Education programming for youth and adults for years, serving the needs of horse owners throughout the state. This program will bring students together in this education and research environment for a world-class undergraduate program focused on the horse. We already have a core faculty of five PhDs dedicated to the program with commitments from others to work with the program. We believe that we can offer the best equine program not just in Kentucky, but in the USA with the resources we have already organized and the backing of the industry.
  - d. Delivery  
At this time the program will be largely residential although we already offer one course via web delivery – ASC 320: Equine Management. We also intend to work with the Equine Business program at the University of Louisville to make courses from each institution available by distance delivery so that students at each university and around the Commonwealth can have access to courses not available solely at our own institution.
  - e. Collaborative Efforts

Again, we are already in discussion with the University of Louisville about collaborations, and have started discussions with Georgetown College about ways to collaborate, including the possibility of a 3+2 BS and MS program.

04. Are we preparing Kentuckians for life and work?
  - a. This degree program was designed with input from the Equine Industry. Students completing this program, with the required internship, will be ready to move into the workforce in a number of areas. Students can expect to work directly on horse farms, either family or corporate farms, assisting in the day to day operation of the enterprise. Students will also fine work in equine journalism, farm services, credit and insurance industries, bloodstocking, agricultural extension, sales, tourism and hospitality, and other areas serving the equine industry.
  
05. Are Kentucky's Communities and Economy Benefitting?
  - a. There is large and significant support for this program by citizens, students and equine businesses as evidenced by turn out and participation at listening sessions state-wide. Equine industry is strongly in favor of this program and believes it will be of value to the state.
  - b. Employment prospects are strong. There are over 400 thoroughbred farms in the Bluegrass which generates a large support industry. This industry needs well trained students to become highly skilled employees. There is also significant interest and growth in the Quarter Horse industry, and this represents a great opportunity for internships and employment. The equine industry in KY is comprised over 28 different breeds, all with their own news and opportunities. With the horse industry comprising the largest share of the agricultural revenue base in Kentucky, there are many opportunities for students from UK and other universities and colleges in the Commonwealth.

## **Part II: BS in Equine Science and Management Proposal**



## REQUEST FOR NEW UNDERGRADUATE PROGRAM

Program:

Formal Option : (if applicable) or Specialty Field (if applicable)

Department (if applicable):

College (if applicable):

Degree title: Bulletin pp.:

CIP Code: UK ID No.: HEGIS CODE:

Accrediting Agency (if applicable):

### I. PROPOSED CHANGE(S) IN PROGRAM REQUIREMENTS

1. Particular University Studies Requirements or Recommendations for this program

	<u>Current</u>	<u>Proposed</u>
I. Mathematics		
II. Foreign Language		
III. Inference-Logic		
IV. Written Communication		
V. Oral Communication		
VI. Natural Sciences		
VII. Social Sciences		
IX. Cross-Cultural		
X. USP Electives (3 must be outside the student's major)		

2. University Graduation Writing Requirement

3. College Depth and Breadth of Study Requirements (if applicable) (including particular courses required or recommended for this program) NOTE: To the extent that proposed changes in 2. through 6. involve additional courses offered in another program, please submit correspondence with the program(s) pertaining to the availability of such courses to your students.

	<u>Current</u>	<u>Proposed</u>
--	----------------	-----------------

4. Premajor or Preprofessional Course Requirements (if applicable)

	<u>Current</u>	<u>Proposed</u>
--	----------------	-----------------

5. Credit Hours Required

Current

Proposed

a. Total Required for Graduation:

b. Required by level:

100

200

300

400-500

c. Premajor or Preprofessional  
(if applicable)

d. Field of Concentration  
(if applicable)

e. Division of Hours Between Major  
Subject and Related Field  
(if applicable)

f. Hours Needed for a Particular Option  
or Specialization (if applicable)

g. Technical or Professional Support  
Electives (if applicable)

h. Minimum Hours of Free or Supportive  
Electives (Required)

6. Major or Professional Course Requirements

Current

Proposed

7. Minor Requirements (if applicable)

Current

Proposed

Total Hours:

8. Rationale for Change(s): (If rationale involves accreditation requirements, please include specific references to those requirements.)

## 8. Rationale for New Program.

There is high demand for a new, formal degree program in Equine Science and Management to be offered by UK. We are in the heart of the Horse Capital of the World. Approximately 30% of KY economic income is from agricultural sources, and the equine industry statewide is the largest contributor to that income, with an estimated \$4 billion in economic impact to the state. There are at least 320,000 horses in KY, distributed across the state and representing many different breeds. The College of Agriculture has served the equine industry through its research and extension mission for years, but has not provided a formal BS degree program to support the industry beyond an equine option in the Animal Sciences degree. Starting in 2005, we began discussions with the industry statewide, we listened to students, and we enlisted industry representation to help begin the process of developing a world-class program. In-house surveys of current students in several of our majors indicate that many students are here because of the horse industry, in spite of no formal BS degree specific to horses. This proposal represents the outcome of those discussions and surveys. We have received inquiries from prospective students as far away as Switzerland and New Zealand, as well as all over the US, inquiring about our programs, indicating wide interest. The demand is strong; we currently (fall 2007) have 45 students already "majoring" in Equine through the use of our Individualized Degree program. We are teaching the introductory course as a Special Topic (GEN 109).

Industry representatives in KY are excited about this program and the opportunity to work with UK to enhance the industry. As a result, the College of Agriculture has announced the Equine Initiative which includes expansion of our research and outreach capabilities, the hiring of new faculty to serve equine industries, and the construction of new facilities at our Main Chance Farm for equine education. To date we have hired three new faculty members to complement our existing faculty, and faculty from Plant and Soil Sciences and our Hospitality program in Nutrition and Food Science are shifting part of their emphases towards equine programming. Facilities for the education mission are under planning and construction, with a new Equine Teaching Pavilion already completed at the UK Main Chance Farm.

Given current enrollment and interest, we expect that this program will provide educational opportunities for upwards of 200 students at any given time. To date, we have done almost no active advertising of our programs. Word of mouth and a 2006 press conference about the Equine Initiative in the College (research, extension and teaching) has resulted in high interest. The program is currently recruiting for itself. During 2007, we have had 226 requests for information on Equine Science undergraduate programming from students graduating high school in either 2008 or 2009. Of these, 138 students were from out of state. And the UK visitor center indicates that they get inquiries on nearly a daily basis asking about equine programming. There is a clear demand for this program. This will bring significant numbers of students to UK from not only Kentucky, but the entire country and the world. Of the current 45 students, 30 are out of state students. This program will serve the needs and interests of students across the spectrum of equine interests.

We are also mindful of the impact this may have on other programs. We have discussed the program with representatives from the University of Louisville, Morehead State, Midway College, Georgetown College, about the programs. Morehead State has an Animal Science program with an Equine emphasis. Midway College's program emphasizes equitation and training as well as management. Murray State and Western Kentucky University both have Animal Science programs with Equine emphases as well, with course in equitation and horse training. The University of Louisville program is in Equine Business. The UK program will complement that program, but not duplicate it. Indeed, we are discussing opportunities to share courses via distance learning with UL so that their students can access equine

science courses and our students can access business classes oriented towards the equine industry. We have tried to be different than those programs. For example, we have no focus on equitation or riding in our program; this is common to the other programs in the state. If students ask about coming here to learn to ride, we inform them of other programs in the state. Our emphasis is solely on a complete education in the science of the horse, coupled with Complementary courses in soils, pasture management, and agricultural management.

This degree program was designed with input from the Equine Industry. Students completing this program, with the required internship, will be ready to move into the workforce in a number of areas. Students can expect to work directly on horse farms, either family or corporate farms, assisting in the day to day operation of the enterprise. Students will also find work in equine journalism, farm services, credit and insurance industries, bloodstocking, agricultural extension, sales, tourism and hospitality, and other areas serving the equine industry.

This degree program meets needs on a state, regional and national level. It also completes the tripartite mission of education, research and extension for the horse industry in the Commonwealth. Given that the Bluegrass is the Horse Capital of the World, UK and the College of Agriculture should be recognized as the leader in equine education, research and outreach. This program will ensure that UK is indeed the leader in this area.

**Table 1. Course Requirements for the Equine Science and Management BS program.**

## University Studies Requirements

Category	Requirement	Credit Hours not in degree req.
Math	Math ACT $\geq$ 26 or MA 109	0-3
Foreign Language	2 yrs HS or University series	0
Inference-Logic	Satisfied by pre-major requirements	0
Written Communication	ENG 104 and approved Graduation Writing Requirement Course	7
Oral Communication	Requirement suspended by University	0
Natural Sciences	Satisfied by pre-major requirements	0
Social Sciences	Three hours satisfied by pre-major requirements	3
Humanities	Six hours from approved list	6
Cross-cultural	Three hours from approved list	3
Electives	Six hours, with at least three hours outside the student's major.	6
	Total hours not included in the major below	25-28

## College Requirement (3 hours)

Gen 100	Issues in Agriculture	3 hours
---------	-----------------------	---------

## Pre-Major Requirements (19-22 hours)

BIO 150	Principles of Biology I	3
BIO 152	Principles of Biology II	3
CHE 105*/111-107*/113	General College Chemistry with labs( this sequence is required for students in option A)	9
CHE 104*/106*	Introduction to General Chemistry and Introduction to Inorganic, Organic and Biochemistry ( this sequence is required for students in Option B)	7
ECO 201*	Principles of Economics I	3
MA 123* or 113*	Elementary Calc or Calc I	3-4

\*Satisfies USP requirements

Major Requirements (28 hours)		
ASC 101	Principles of Animal Biology	3
EQM 101*	Introduction to the Equine Industry	2
EQM 105*	Horse Behavior and Handling	2
ASC 310	Equine Anatomy and Conformation	2
ASC 320	Equine Management	3
EQM 351*	Equine Health and Diseases	3
EQM 399*	Equine Internship	3
ASC 410G	Equine Sciences	3
EQM 490*	Capstone for Equine Science and Management	3
AEC 302	Agricultural Management Principles	4
	Total	28

\* New courses for the program

Option A Equine Science Requirements (21 hours)		
CHE 236	Survey of Organic Chemistry	3
ASC 325	Animal Physiology	3
ASC 364	Reproductive Physiology of Farm Animals	4
ASC 378	Animal Nutrition and Feeding	4
PLS 366	Fundamentals of Soil Science	4
PLS 510	Forage Management and Utilization	3
	Total	21

Option B Equine Management Requirements (21 hours)		
STA 291	Statistical Methods	3
ACC 201	Financial Accounting I	3
ECO 202	Principles of Economics II	3
MKT 300	Marketing Management	3
AEC 305	Food and Agricultural Marketing Principles	3
AEC 320	Agricultural Marketing and Sales	3
HMT 320	Hospitality and Tourism Marketing	3
	Total	21

**Specialty Support Requirement (18 hours)**

The student will choose, in consultation with an advisor, at least 18 hours of courses at the 200 level or above that will strengthen the program in an area of importance to the student. To aid in developing this area a study a list of suggested courses is available to advisors. The list includes courses in Animal Sciences, Plant and Soil Sciences, Biosystems and Agricultural Engineering, Agricultural Economics plus other areas of study at the University of Kentucky.

**Summary of Requirements**

	Equine Science Option A	Equine Management Option B
USP Requirements including the writing requirement but not the hours in the core or option. This includes 6 hours USP electives.	25	25
Pre Major hours	21-22	19-20
College of Agriculture Requirement	3	3
Core Hours	28	28
Option Hours	21	21
Specialty Support	18	18
Free Electives	3-4	5-6
<b>Total for graduation</b>	<b>120</b>	<b>120</b>

**Table 2. Eight Semester Plans for Equine Science and Management**

**Option A: Equine Science**

Freshman Semester 1 (fall)

ASC 101 Animal Biology	3
EQM 101 Intro to Equine Industry	2
CHE 105 General Chem I	3
CHE 111 (Chem Lab)	1
ENG 104 Writing	4
GEN 100 Issues in Agric.	3
	<hr/>
	16

Freshman Semester 2 (spring)

EQM 105 Eq Behavior & Handling	2
BIO 150 Principles of Bio I	3
CHE 107 General Chemistry II	3
CHE 113 Chemistry Lab II	2
ECO 201 (USP Social Sci)	3
MA 123 Elementary Calc	3
	<hr/>
	16

Sophomore Semester 3 (fall)

BIO 152 Principles of Bio II	3
CHE 236 Survey of Organic	3
ASC 320 Equine Management	3
PLS 366 Soil Sciences	4
	<hr/>
	13

Sophomore Semester 4 (spring)

ASC 325 Animal Physiology	3
AEC 302 Agric. Mgmt Principles	4
ASC 310 Equine Anatomy	2
ENG 203 Business Writing	3
USP Humanities	3
	<hr/>
	15



Junior Semester 5 (fall)

ASC 378 Animal Nutrition	4
EQM 351 Health and Diseases	3
USP Social Science	3
Specialty Support	3
	<hr/>
	13

Junior Semester 6 (spring)

ASC 410G Equine Science	3
ASC 364 Repro Physiology	4
PLS 510 Forage Mgmt	3
Specialty Support	3
USP Free Electives	3
	<hr/>
	16

Senior Semester 7 (fall)

EQM 399 Internship	3
Cross-cultural elective	3
Specialty support	6
USP Free electives	3
	<hr/>
	15

Senior Semester 8 (spring)

EQM 490 Capstone Course	3
Specialty support	6
USP Humanities	3
Free electives	4
	<hr/>
	15

TOTAL HOURS 120\*

\* This assumes that the student does not need to take MA 109 and satisfies Language Requirements with High School work. This provides for 4 hours of unrestricted electives beyond the required 6 hours USP electives.

## Option B: Equine Management

### Freshman Semester 1 (fall)

ASC 101 Animal Biology	3
EQM 101 Intro to Equine Science	2
CHE 104 Intro to Gen Chem	3
ENG 104 (USP Writing)	4
<u>GEN 100 Issues in Modern Agric</u>	<u>3</u>
	15

### Freshman Semester 2 (spring)

EQM 105 Eq Behavior & Handling	2
BIO 150 Principles of Bio I	3
CHE 106 Intro Organic/Biochem	4
ECO 201 (USP Social Sci)	3
<u>MA 123 Elementary Calc</u>	<u>3</u>
	15

### Sophomore Semester 3 (fall)

ACC 201 Fin Acct I	3
AEC 302 Agric. Mgmt Principles	4
ASC 320 Equine Management	3
BIO 152 Principles of Bio II	3
<u>STA 291 Intro Statistics</u>	<u>3</u>
	16

### Sophomore Semester 4 (spring)

ECO 202 Principles of Eco II	3
ENG 203W Business Writing	3
ASC 310 Equine Anatomy	2
MKT 300 Marketing Management	3
<u>USP Humanities</u>	<u>3</u>
	14

Junior Semester 5 (fall)

EQM 351 Health and Disease	3
HMT 320 Hosp Tourism Mrkt	3
Free Elective	3
USP Humanities	3
Specialty Support	3
	<hr/>
	15

Junior Semester 6 (spring)

ASC 410G Equine Science	3
AEC 305 Food & Ag Marketing Prin	3
Specialty support	6
USP Elective	3
	<hr/>
	15

Senior Semester 7 (fall)

AEC 320 Agric Marketing & Sales	3
EQM 399 Internship	3
Specialty support	3
USP Cross-cultural	3
USP Free electives	3
	<hr/>
	15

Senior Semester 8 (spring)

EQM 490 Capstone Course	3
Specialty support	6
USP Social Science	3
Free electives	3
	<hr/>
	15

TOTAL HOURS (minimum) 120\*

\* This assumes that the student does not need to take MA 109 and satisfies Language Requirements with High School work. This provides for 6 hours of electives beyond USP Electives.

**10. Signatures of Approval:**

DATE of Approval by Department Faculty	/	printed name      Reported by Department Chair      signature
DATE of Approval by College Faculty	/	printed name      Reported by College Dean      signature
*DATE of Approval by Undergraduate Council	/	printed name      Reported by Undergraduate Council Chair      signature
*DATE of Approval by Graduate Council	/	printed name      Reported by Graduate Council Chair      signature
*DATE of Approval by Health Care Colleges Council (HCCC)	/	printed name      Reported by Health Care Colleges Council Chair      signature
*DATE of Approval by Senate Council		Reported by Office of the Senate Council
*DATE of Approval by the University Senate		Reported by the Office of the Senate Council

\*If applicable, as provided by the *University Senate Rules*.

Rev 9/07

**UK Equine Initiative**  
**Assessing Interest in Equine-Related Programs and Courses**

NOTE: This survey was given to 111 students in the following courses during the spring of 2006.

ASC 310 – Equine Anatomy and Conformation  
 ASC 410G – Equine Science  
 Members UK Equestrian Club

As you may have heard, the College of Agriculture is exploring the possibility of offering a BS degree option in Equine Science and Management. We are trying to gather some information to help us in determining interest in such a degree and/or equine-related courses. Your responses to these questions will be invaluable in helping us to determine the level of interest in the expansion of our equine offerings and we appreciate your sharing your ideas and interests with us.

**A. When you came to UK, what was your original major and option?**

<b>Degree</b>	<b>Major – Number</b>	<b>Major – Percent</b>	<b>Option – Number</b>	<b>Option - Percent</b>
Animal science	57			
Ag Biotech	3			
Equine Science	1		6	
Agricultural Economics	2			
Pre-vet	11		8	
Theater	1			
Business Marketing	4			
Business			1	
Accounting	1			
Management	1		1	
Psychology	1			
Biology	3			
Sociology/Criminal Law/Deviance	1			
Pre-pharmacy/Biology	1			
Pre-Pharmacy	1		1	
Interior Design	1			
Pre-physical therapy	1			
Journalism	1			
Communications	1			
Undecided/undeclared	9			
Pre-Med			1	
Pre-PA			1	
Other, not specified	10			

**B. What is your current major and option?**

<b>Degree</b>	<b>Major – Number</b>	<b>Major – Percent</b>	<b>Option – Number</b>	<b>Option - Percent</b>
Animal science	24			
Ag Biotech	3			
Equine Science (identified as Equine!)	44		7	

Agricultural Economics	3			
Pre-vet	8		5	
Ag communications	1			
Theater				
Business Marketing	3			
Business	1			
Business and Economics	1			
Accounting	2			
Management	1		1	
Psychology	2			
Biology	1		1	
Chemistry	1			
Sociology/Criminal Law/Deviance	1			
Pre-pharmacy/Biology	1			
Pre-Pharmacy	1			
Interior Design				
Pre-physical therapy				
Journalism				
Communications				
Integrated strategic communications	1			
Undecided/undeclared	1			
Pre-Med	1			
Pre-PA/Biology	1			
Elementary special education	1			
Music education	1			
Elementary education	3			
Dietics	1			
Other not specified	5			

**C. What is your current class standing**

<b>Class Standing</b>	<b>N</b>	<b>%</b>
Freshman	23	
Sophomore	18	
Junior	30	
Senior	38	
Graduate student	2	

**D. What year and semester do you expect to graduate?**

<b>Graduation date</b>	<b>N</b>	<b>%</b>
May 2006	26	
August 2006	0	
December 2006	12	
May 2007	16	
August 2007	1	
December 2007	6	
May 2008	15	
August 2008	0	
December 2008	4	

May 2009	22	
August 2009	0	
December 2009	1	
May 2010	1	
August 2010	0	
December 2010	0	

**E. What do you expect to do after graduation? Circle only one!**

<b>Career Intentions</b>	<b>N</b>	<b>%</b>
Go to veterinary school	33	
Get a job in the horse industry	42	
Get a job in an area unrelated to the horse industry	12	
Attend graduate or professional school other than veterinary school	30	

**F. If you intend to go to veterinary school and you get in, do you expect to eventually practice primarily with horses?**

Yes	19	
No	22	

**G If you intend to go to veterinary school and do not get in, which of the following statements would most likely represent your career path?**

I would definitely want to get a job in the horse industry	20	
I might want a job in the horse industry if the salary and benefits were good	14	
I have no significant interest in working in the horse industry	8	
Other	1	

**H. Do you expect to own a horse or horses after graduation?**

Yes	90	
No	16	
Maybe	1	

**I. Which of the following describes your experience with horses in the last 5 years outside of class? CIRCLE ALL THAT APPLY**

Have taken riding lessons	69	
Own my own horse/horses	58	
Have shown and trained horses	59	
Have worked on a breeding farm	39	
Have worked for a trainer	43	
Have worked for an equine veterinarian	30	
Have been a member of or a volunteer with a 4-H Horse Club	25	

Have been a member of or a volunteer with Pony Club	7	
Have been a participant in a breed related youth team (Amer Quarter Horse Assoc., etc)	14	
Have participated on the UK Equestrian Team or Dressage Team	52	
None or very little	18	

It is possible that this new Equine major will have two tracks:

Track 1 would be for students interested primarily in the health, breeding, exercise physiology and management of horses (an Equine Science Option, somewhat like the current Equine Option in Animal Science but probably with less Chemistry and with more Equine Specific Classes)

<b>J If this degree program had been available when you entered UK, would you have taken it?</b>		
Yes	58	
Yes, but only if it allowed me to meet the prerequisites for vet school	28	
No	25	

<b>K. If this degree program was available NOW would you transfer to it?</b>		
Yes	30	
Yes, but only if it allowed me to meet the prerequisites for vet school	17	
Yes, but only if it allowed me to graduate on time	28	
No	37	

**L. If the choice you would have made at admission to college is different than the choice you would make now, please explain why. (Briefly)**

- Yes, I am interested in equine law.
- Music Ed is boring.
- I enjoy horses and would like to do something with them in a job.
- I am undeclared but I want to go into equine law so switching to a more equine related major would be better.
- I was planning to attend the University of Findlay for equine science but wanted a larger coverage atmosphere and chose to attend UK and be pre-med.
- I probably would maybe have taken those horsey classes.
- I would be interested in a major with more on horses, but not animal science or science.
- I only have 2 semesters of undergrad left, it just seems to take it would throw me off track.
- I wasn't sure what I wanted to do until I took ASC 106 with Dr. Silvia and found my passion for horses.
- I am interested in the Equine Industry, but have so interest in chemistry, pork, cows, or poultry.
- I would like more equine specific classes, compared to current animal science classes that deal with many other livestock species.
- I wouldn't choose differently.
- Would have to have been more equine focused.

Track 2 would be for students interested in the business management aspects of the horse industry which



would include specific courses related to equine finance, equine marketing, international trade etc (perhaps an Equine Business Management Option).

<b>M. If this degree program had been available when you entered UK, would you have taken it?</b>		
Yes	54	
No	56	

<b>N. If this degree program was available NOW, would you transfer to it?</b>		
Yes	25	
Yes, but only if I could graduate on time	23	
No	63	

**O. If the choice you would have made at admission is different than the choice you would make now, please explain why.**

- I want a job in the horse industry but I don't want to be a vet.
- I am undeclared but I want to go into equine law so switching to a more equine related major would be better.
- I am very interested in the business-world, however, I have not decided what I want to do in the field. I would be very interested in looking into the business management aspects of the horse industry.
- I would double major in both.
- I would take a combination of both of these and make me more rounded and knowledge for entering the industry.
- I'm interested in marketing/management and want to connect it with the horse industry, so this would be exactly what I wanted.
- This is exactly what I'd like to do.
- I wouldn't choose differently.
- Would have to have been more equine focused

<b>P. If instead of offering a BS in Equine Science and Management, there was a minor in Equine Studies would you take it?</b>		
Yes	28	
Yes but only if it allowed be to graduate on time	35	
No	26	

<b>Q. Even if this does not affect you, do you think UK should offer a BS degree in Equine, or would a minor only be sufficient?</b>		
Yes there should be a BS degree	96	
Offering only a minor would be sufficient	14	
There is no need for a major or a minor	0	

R. Please indicate how much interest you have or would have in taking each of the following courses. Please circle the number that best reflects your interest in taking a course such as this.

Course	High Interest	Some Interest	Little or no Interest
Horses and The Horse Industry	76	30	6
Horse Behavior and Handling	59	26	5
Equine Management	77	19	15
Equine Law	46	35	31
Equine Marketing	48	37	27
Equine Genetics and Pedigree Analysis	40	34	20
Equine Anatomy and Physiology	74	30	8
Equine Breeding Management	65	31	15
Horse Farm and Equine Business Practices	63	30	19
Equine Nutrition	67	32	13
Equine Exercise Physiology and Performance	70	28	8
Equine Diseases	74	31	8
Basic Horse Training	61	32	19
Equine Facility Design and Management	48	40	23
Human Resource Management in the Horse Industry	34	50	28

<b>S. Are there other courses or components of an Equine major that you think should be included in a program? If so, please describe.</b>		
Equine Equitation	2	
Feet	1	
Racing Physiology	1	
Intermediate Training	1	
Equine Training	1	
Equine Law	1	
Equine Business Mgmt	1	
Breeding Management	1	
Ethics	1	
Specialization classes	1	
Riding	3	

I plan on getting a second bachelor's degree from the University of Arizona's Race Track Industry Program. If there were classes here that were similar, I would take those classes no matter how far it pushed my graduation back.

Participants:

Students in ASC 310 – Equine Anatomy and Conformation – Spring 2006

Students in ASC 410G – Equine Science – Spring, 2006

Members UK Equestrian Club -- Spring 2006

## Current Students Listening Session

April 26, 2005

*It would be like Midway College. UK unfortunately does not have anything like theirs. It's a shame that we are in the horse capital of the world but only offer a few courses in equine studies and we don't even have a barn and horses for the students.*

*Even Morehead State has riding classes, actual physical riding classes, and a million different equine programs. If students want to pursue these kinds of goals, where they need hands on training, they won't choose UK. I didn't know about Midway when I first came here, but I was thinking of transferring there a couple of years ago. I decided I loved UK, but if I did it over again, I would have considered other schools. UK College of Agriculture Junior*

### Major of responding students

Equine nutrition (2)  
Animal sciences (3)  
Ag economics  
Animal sciences - equine production  
Ag Communications (2)

### Class of responding students

Graduate student (2)  
Senior (2)  
Junior (4)  
Freshman (1)

### Equine-related clubs student respondents are in

Horse judging (2)  
UK Horseman's Association/Club  
Horse Racing Club (4)  
Dressage  
Equestrian Team (2)

Equestrian -- I was on the equestrian team, but it was hard to fit my schedule around the one they wanted me to have. I couldn't ride my own horse and the horses they use as much as I wanted.

None (1)

No UK clubs but 4 national or state organizations

### What are your equine-related personal or professional career goals?

Careers in the equine industry

Vets

Vet school and being an equine vet

Trainers

Business management

Sales in equine-related businesses

Work in a veterinary products sales position or equine feed sales

I would like to pursue a career involved in the business end of the horse industry  
Hope to obtain a manager position on a horse farm or find a job related to pedigree  
analysis/research  
Law school and practicing equine law  
I would like to do breeding and rehabilitation  
Now I'm going to be interviewing with a Saddlebred magazine, hopefully for a sales and editorial  
position.

Serving as a professional manager of a major horse farm

Managing a personal horse farm – caring for own horses – not as a profession but as an avocation  
I also plan on having a horse farm of my own  
I have a horse, and I feel like horses will always be a part of my life. At one point I wanted to train  
Saddlebreds, but that dream was shot down after a bad internship.

Participation in diverse competitive equine activities  
Compete dressage at the highest levels, promote welsh ponies and cobs (also ponies in general) as  
dressage athletes. Provide venues to uplift and promote sport horses in the Lexington Community.

Research and teaching in equine-related sciences at a university  
After Master's I'll most likely continue for my PHD and end up in academia

**Imagine your ideal undergraduate program with an equine-related emphasis. What types of  
classes would be offered? In other words, what knowledge or skills do you feel it is essential for  
you to acquire while at UK in order to reach your personal or professional goals?**

I think that there also need to be more thorough equine classes for those who are animal science with  
equine focus.

We need an equine-related teaching unit  
Health practices  
General equine husbandry  
General horse training

We need to identify and create a skill set  
Horse farm management  
Reproduction consultant  
Hands-on experience with horses  
Equine nutrition lab  
Bloodstock research  
Alternative medicines and treatments  
Equine health and diseases

We need extensive options for individual choice – options that include:

Business side  
Horse enterprise management (how to start, run, fund a horse farm or business)  
Business related equine courses (marketing, law, management)  
I would love to see an equine law program for undergrads.  
Also equine business classes - classes the deal more with the equine industry in KY rather than  
just management.

Production/science side  
Nutrition  
Equine nutrition

## Reproduction

- Equine reproduction class (AI, embryo transfer, hormone therapy)

## Anatomy/physiology

- Basic classes in business, chemistry, physics, biology

## Equine science course

- Production, husbandry, training, nutrition, evaluation

- Equine breeds and breeding (bloodstock)

- Equine husbandry

We need more horse-specific courses rather than a section on horses in other courses. For example:

- Equine reproduction

- Horse enterprise management

- Equine nutrition with a focus on the science behind supplements and a research lab option

- Equine career development

- Equine health

- Rehabilitation classes

## Practical issues

- Equine career development

- Hands-on horse classes

- Hands-on classes – cover things with definite hands-on application but it's still essential to understand things on a basic level

- If there were facilities, a class on horsemanship, riding basics, horse care – both an introductory and advanced class (could include sales prep, breeding)

- Another class that I think there would be A LOT of interest in is an equitation class or horseback riding 101...a class where people got to work more hands-on with and ride horses - also incorporate basic grooming and care.

## Pedigree analysis

## More equine graduate classes

- At the graduate level:

- We need more than 1 equine-related class

- Need a two semester equine nutrition class

- The same list as the proposed courses for the undergraduate level but with greater depth

- Courses that focus on broader professional opportunities in the industry

## A program that bridges the gap between the "science" and the "practical"

- Courses on conditioning, feeding, management, as well as hands on experience with a top notch facility and in and around the community would provide the proper education for students.

## We need an equine management major that becomes the leader in the industry

- Horse enterprise management

- Farriers

## Make the current classes have more a science-base

- For example, to understand how to feed a performance horse you need to know something about physiology as well as knowing something about how feeding influences the business (operating costs) as well as conditioning

## We need to check out the equine instructional programs at Cornell, Penn State, Arizona. University of Florida, University of Louisville

- Need to contact the University of Florida to learn about their courses and their equine management major. Contact:

- Joel McQuagge (equine instructor)

- Sandra TenBroeck (PHD equine course instructor)

- Sylvia Beauchamp (Animal science advisor)

It would be like Midway College. UK unfortunately does not have anything like theirs. It's a shame that we are in the horse capital of the world but only offer a few courses in equine studies and we don't even have a barn and horses for the students.

Even Morehead State has riding classes, actual physical riding classes, and a million different equine programs. If students want to pursue these kinds of goals, where they need hands on training, they won't choose UK. I didn't know about Midway when I first came here, but I was thinking of transferring there a couple of years ago. I decided I loved UK, but if I did it over again, I would have considered other schools.

Internships that are strongly recommended and with CA serving as the connection between students and the local equine industry

Courses (or components of courses) offered by persons in the industry

Students in the ideal program would have access to equine scholarships that are available to both KY and non-KY students

Classes that are more thoroughbred/race horse specific would also be very beneficial.

I feel it is necessary to have a diverse number of programs that utilizes all technology and aspects of the equine community. UK shouldn't only be based on thoroughbreds, but the growing population of sport horse, and sport horse breeding programs that are currently dominating the United States

**Currently, the CA offers the following equine-specific courses:**

**ASC 310 Equine anatomy and conformation**

**ASC 311 Advanced equine evaluation**

**ASC 320 Equine management**

**ASC 410G Equine science**

***For Juniors and Seniors* How many of the equine-specific courses offered by the College of Agriculture have you taken?**

3 classes (2)

2 classes (3)

1 class (0)

No classes (1)

**Please comment on the degree to which the equine-specific courses you have taken have contributed to your personal or professional goals**

They are electives in my degree, but have helped me understand some more of the science behind the horse

The 2 equine-specific courses taken thus far have greatly helped contribute to the knowledge needed and required to obtain my personal/professional goals

I've taken ASC 310 and 320 - they have given me an overall knowledge of horses and the industry. They have been helpful, but honestly I thought I would come away with more information...I wish that I felt more confident in the amount of information I learned and the degree to which I learned it. I just think that there need to be more equine-specific classes that go deeper into the topics covered in 310 and 320.

I feel that in order to work with horses in any capacity in the future I would need to learn more about them - a lot of the knowledge that is needed to work with horses can only be obtained through hands-on work and time spent with them. I think that there need to be more classes that are at the barn with the horses learning all of the things that "horse people" know, but don't traditionally get taught. Students need an opportunity to get a practical horse education in addition the all of the scientific and technical education.

Dr. Coleman and Lawrence really know what they are talking about. I got a job with Rood and Riddle equine hospital this year, and if I had that job while taking those classes, I probably would have chosen pre-vet as a major and would have tried to go to vet school.

**If you have not taken all of the equine-specific courses, why not?**

Scheduling conflicts with other ag classes for ASC 311

I will take ASC 311 in the fall, but probably none of the others. I feel courses in the B&E College are more beneficial

I plan to take all of the courses in the near future

I will be taking ASC 311 this fall and ASC 410G in the spring. I just haven't had time in my schedule for them yet.

Didn't take the 410G class because I didn't have the prereqs

I believe that UK is insufficient in providing the knowledge that I need as a sport horse breeder and trainer to raise the bar in my community. The program is fixed solely on raising and training thoroughbreds or feeds and feeding research. The program needs to operate like Cornell's model, where there are a diverse number of horses being raised, trained, and sold. And a facility that provides a home for its teams and hands-on portion of the programs.

Also the professors teaching the asc courses aren't knowledgeable enough to teach them, the examples they use are old and extremely out dated.

***For Sophomores and Freshman* How many of the equine-specific course do you expect to take and when do you expect to take them?**

I expect to take them later in the year and as many as there are offered

**Would you prefer to take a class that teaches hands-on horse handling skills or take an internship where you would learn hands-on skills from someone that is practicing that activity as their business?**

Internship

The credit hours for a class on basic handling could be used for something more important

Both – we need facilities for hands-on experience and training (e.g., farrier training)

Both. It shouldn't just be regulated to either or, students need to be forced out into the world and have hands on resume builders, but need the fall back option of school.

Yes - both - that would be good

It would depend on the quality of the class and the quality of the internship. But the option of both would be the most beneficial



Taking a class that teaches hand-on horse handling skills should be required before moving on to an internship that is practicing the same activity. Both should be required in the curriculum

I would rather that there was a class...that way everyone was learning the same things...with an internship there's always a chance that the person overseeing you won't teach you the things that you really need to know or they will let you slide with doing less work than other students and thus you would learn less. I think, however, that internships would provide a lot of great hands-on experience and allow students to see what they can do with their degree...see what options are out there.

A class. Working hands on with horses is fun, and it's great for a group of students to learn together.

Classes are more suited to teaching a larger number of students. Maybe it's best to leave the internships to students wanting additional experience. Because students are more apt to take hands-on lab-type classes (ie. More fun), but I still think it's important to include the science aspect of it in the same class – as compared to having two types of classes – science vs applied

### **What extracurricular activities related to equine would you like to see available here at UK?**

General Horseman's Association

Activities of different types that reach out to all breeds, not only thoroughbreds

Horse club activities often compete with many other equine-related activities in the area – but clubs provide contacts into the industry and bring together people with shared interests

More intense clubs

Internships

Job placement within the local community

Extension to other universities in US and abroad

Competitive equine activities

Would definitely like to see the dressage team's standards raised. I would like to see more involvement with the equine community at large.

As a member of the equestrian team, of course, I would love to see us become a varsity team. I know that there's also some interest in an eventing team and possibly even doing some saddle seat. I think that by creating a stronger riding program here at UK there will inevitably be more interest and need for equine-related classes and degrees and vice versa.

Everything you could possibly offer. I think UK should definitely offer a program like any of the colleges around that have it. (Midway, Morehead, William Woods.) But first, we need some horses for the equestrian team. I don't know where the money would come from, but if UK could do it, a barn with some horses that could compete would be ideal.

### **If you could change one thing right now to enhance equine-related opportunities in the CA, what would you change?**

Connect and improve communications between the Gluck Equine Research Center and the equine-related courses currently offered to bring a science-based perspective to these courses

Contact the College of Business and work with them to offer an equine business management course  
Add at least one equine-related scholarship to the CA

Increase the support for equine-related clubs

Judging teams in CA get less support than judging teams at other universities and the horse judging teams get the least support

Promote equine-related clubs across campus

Find ways to give more exposure to equine-related clubs, activities, and courses in the CA and especially promote the successes of the clubs and classes

*Lori's comments and reflections*

The professional interests are very diverse

Equine management minor

Ag Econ has a role to play here

Possibly seek partnership with B&E College as well as Patterson School of Diplomacy and international commerce

Internship – semester abroad in equine industry – and/or student exchanges

**From:** Dillon, Amber D  
**Sent:** Monday, February 25, 2008 2:37 PM  
**To:** Headrick, Jason  
**Cc:** Troyer, Brian C  
**Subject:** RE: Equine Science & Management

Jason,

At the Visitor Center, we receive a request regarding some aspect of Equine Studies/Science almost on a daily basis. Families always ask for information regarding the Equine Science major as well as materials related to any equestrian teams, clubs, or facilities. They also always ask about the farm, the student opportunities within it, and its location (although we're always quick to remind them they cannot just "drop in" to the facility, as it is a working farm).

Let me know if we can be of any other assistance! Thanks so much!

Amber Dillon Campbell  
Associate Director, University of Kentucky Visitor Center  
Office of Undergraduate Admission  
009D Main Building  
Lexington, KY 40506-0032  
Office: (859) 257-3547  
Fax: (859) 323-5455

**From:** Headrick, Jason  
**Sent:** Monday, February 25, 2008 12:54 PM  
**To:** Troyer, Brian C; Dillon, Amber D; Hibbard, Laura  
**Subject:** Equine Science & Management

We are trying to gauge some of our interest from sources outside of our office for different programs. How many requests for information, boarding facilities, etc. does your area get each week for information on Equine Science & Management or equine related programs? Thanks in advance for your help in this information.

Jason Headrick

**Jason Headrick, '02**  
*Director of Student Relations*  
**University of Kentucky**  
**College of Agriculture & School of Human**  
**Environmental Sciences**

Prospectus for Facilities in Progress at the Main Chance Farm on Newtown Pike.

# Proposed UK Equine Education Campus

## Phase 1 Teaching Facility

August 1, 2006

Anticipated cost: \$1 million

### Objective

To develop a facility to initiate UK College of Agriculture's new Equine Science & Management Degree Program beginning Fall 2007

### Uses

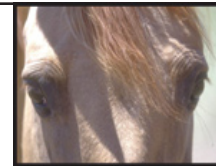
Primarily for teaching classes that require suitable space for hands-on activities and demonstrations (a capability not currently available)

### Proposed site -- Maine Chance Farm

Locating the facility here will provide timely access for students attending classes and travel time for students, faculty and staff will be minimized. In addition, horses and stabling facilities are readily available. As this facility will be primarily a teaching unit, no outside horses will be allowed in the facility unless they are part of another university unit and all health regulations have been met.

### Equine Course Needs

- Equine behavior and handling (*new course*)
- Equine anatomy and conformation (*existing course*)
- Advanced horse evaluation (*existing course*)
- Equine management (*existing but modified course*)
- Equine health and diseases (*new course*)
- Equine sciences (*existing course*)
- Advanced topics in equine science (*new course*)
- Application of animal sciences (*existing course*)
- All animal sciences courses that have an equine component in their lab sections will also use this facility. (*Currently, existing courses with hands-on activities are taught outdoors, which greatly limits the activities and demonstrations that can be included in course material.*)



University of Kentucky  
**Equine Initiative**



UNIVERSITY OF KENTUCKY  
College of Agriculture

### Facility to Include

- Covered 60 x 100- foot horse handling facility with a rubber crumb floor (for minimal dust)
- 75-seat classroom with Smart Classroom technology
- Laboratory area for activities associated with offered classes
- 30 x 60- foot enclosed climate controlled area to house high speed treadmill
- Portable breeding dummy in arena area

### Future Improvements

- High speed treadmill
- Additional equipment needs for collection of stallions and breeding mares
- Breeding workshop and hosting capability

### Future Uses

When the Phase 2 Education complex is built, this facility will remain a teaching/research facility with a focus on exercise physiology and equine reproduction.





# Phase 2 Education Complex

Anticipated cost: \$7-10 million, possible sites currently under evaluation

## Classrooms

- Two large classrooms
- Seating capacity for 125 and 250
- Designed to be divided into smaller rooms if needed

## One theater-style classroom

- Includes area to hold live animals for demonstration purposes
- Seating capacity for 300

## Resource room

- Seating capacity for 40
- Can be used as a small classroom as well as a location for reference materials and computer access

## Stabling and arena

- 110- x 250-foot covered arena with bleacher seating for 500
- Stabling area with a stall capacity for 90 animals, located on either side of the covered arena
- Areas for feed and equipment storage

## Potential Facility Uses

- Extensive use anticipated for courses in UK's Equine Science and Management degree program
- Ability for instructors to use either (or both) classroom space or arena depending on course content. This **flexibility** adds to hands-on activities for students
- Will allow for certain courses in the new Equine Science and Management curriculum to be **taught in their entirety** at the complex (*reduces student and faculty time commuting back and forth between facilities*)
- Hosting 4-H youth development activities, including 4-H horse contests and livestock judging contests (*currently either held off campus or require the construction of temporary facilities*)
- **Extension programming** for youth and adult audiences. Arena with stabling and classrooms allow education programs that utilize non-UK owned horses
- Opportunities for **area horse industry** to use for educational activities
- Host facility for a **UK NCAA Women's Equestrian Team**, if and when this team designation is established

## Contact Info

- **Nancy Cox**, Kentucky Agricultural Experiment Station Director, (859) 257-3333, [ncox@uky.edu](mailto:ncox@uky.edu)
- **Bob Coleman**, Associate Professor, Department of Animal and Food Sciences, (859) 257-9451, [rcoleman@uky.edu](mailto:rcoleman@uky.edu)
- **Marci Hicks**, Associate Director of Advancement/Director of Development, (859) 257-7200, [marci.hicks@uky.edu](mailto:marci.hicks@uky.edu)



Equine Newsletter for Students Interested in all Things Equine.

# UK Equine Initiative Student Newsletter

*Inaugural Edition, November 2007*

**W**elcome to the first issue of a newsletter for students and potential students interested in all things equine at the University of Kentucky! UK has a lot to offer if you're interested in horses – and even more is coming soon!

From a new undergraduate program and enhanced research to new faculty hires and upgraded facilities, there hasn't been a more exciting time to be part of the UK College of Agriculture and its equine programs.

This publication is a work in progress and will ultimately have its own visual identity. Its identity and look will be a result of your feedback. The Equine Initiative is currently in the process of a major enhancement of its communications efforts. We will be launching newsletters and revamping the Equine Initiative website in an effort to offer you more relevant and timely information. We will offer information specific to students, faculty, staff and a wide range of stakeholders from Kentucky's equine industry. We are looking to you to help us constantly tweak the information we provide. What are we missing? What should we change? What would you like to know more about? What are some great story ideas?

We also have a group on Facebook, so if you'd prefer to receive information that way, please request to join the Equine Initiative Group.

And, we are looking for a name. Since we're running out of good ideas (they all seem to be taken!) – and we know that our students, faculty and staff can be creative geniuses, we are offering a \$50 gift certificate to a Lexington restaurant of your choice if you submit the newsletter name that is ultimately chosen. Email [equineinitiative@email.uky.edu](mailto:equineinitiative@email.uky.edu) with your ideas. The deadline for a name is Dec. 1, 2007.

So pull up a chair (or a laptop) and read more about what's going on. We welcome any feedback you might have and look forward to communicating with you every month! And don't forget to submit your great name ideas so this newsletter can begin to take on its identity!

Serving Kentucky's horse industry through research and education

## University of Kentucky Equine Initiative

**We share the dream  
for his future...**

**UK** UNIVERSITY OF KENTUCKY  
College of Agriculture

[www.ca.uky.edu/equine](http://www.ca.uky.edu/equine)



## Administrative Update

By Dr. Mike Mullen, UK College of Agriculture  
Associate Dean for Academic Programs

Dear Students,

It is a pleasure to welcome you to our newsletter for and about equine programs in the College of Agriculture at UK. It has been an exciting two years since we kicked off the Equine Initiative, and much is happening! The College has worked hard to make sure all phases of equine programming – education, research and extension – are fully integrated and available to serve our students and the industry. Of course, perhaps the most exciting development has been the creation of our undergraduate program in Equine Science and Management.

The equine undergraduate program is the result of numerous listening sessions with equine groups throughout the Commonwealth of Kentucky and the work of our professors and industry representatives. The program has a core of 28 credit hours in courses directly related to equine science and management. As a student, you would then choose an option. The Science option will take you through more courses in animal science and land and pasture management. If you plan to work directly with horses on a working farm, or are thinking of equine veterinary work, this is the plan for you. The Management option will allow you to take courses in agricultural and economic policy and management. You also will work with your advisor to choose electives that will tailor your degree towards your career goals.

We have also recently completed an equine pavilion at our Main Chance Equine Campus. This new pavilion provides for teaching and learning activities central to the Equine degree program. I think you will agree that it is a wonderful facility. Additional facilities for education and research are also planned for the Main Chance campus, so stay tuned for new developments!

The College of Agriculture is excited about our equine programs. We welcome you and hope that you are as excited as we are about being a part of this new opportunity in Equine education.

Yours in Equine Education,



Dr. Mike Mullen  
Associate Dean

## Equine Initiative Highlights

WHAT HAS EI BEEN UP TO?

So what's been going on since the inception of the Equine Initiative in 2005? Visit the current EI website at [www.ca.uky.edu/equine/index.htm](http://www.ca.uky.edu/equine/index.htm) to see some of the happenings and significant news. Of note, the current informational brochure can be found in PDF format at [www.ca.uky.edu/equine/images/booklet/EQUINE-Initiative-Booklet-jan-2007.pdf](http://www.ca.uky.edu/equine/images/booklet/EQUINE-Initiative-Booklet-jan-2007.pdf). There is also a lot happening at the UK Maine Chance Equine Campus. To see some of those plans, please visit [www.ca.uky.edu/equine/images/booklet/clusters.pdf](http://www.ca.uky.edu/equine/images/booklet/clusters.pdf).

INFORMATION FOR EQUINE PROGRAM  
SECOND MOST REQUESTED

This fall, the top two requests about UK majors at the UK Visitor's Center are both College of Agriculture degree programs. Pre-vet was the most requested program, followed by the new equine program.

EQUINE SCIENCE AND MANAGEMENT  
BACHELOR'S DEGREE LAUNCHED

Hailing from as far away as Maine, California and Florida, students have enthusiastically flocked to the new Equine Science and Management program. This past fall, UK welcomed 46 new students and has handled many requests for tours, visits and other information.

"I came to UK for horses; growing up in Maine I had always known Kentucky as the horse capital of the world. Why would I want to be anywhere else?" said Audrey Jarrett, an ESM student from Belfast, Maine.

The students attending UK for this program tend to have been active in a wide variety of breed organizations and industries before enrolling at UK.

The ESM program, currently offered as an independent study degree until final university approval occurs, offers a wide variety of classes and with two separate tracks that touch on all aspects of the equine industry. The first track is Equine Science which focuses on the biological sciences and day-to-day activities and management of horses. The second track is Equine Management, which is more focused on the business, industry and marketing aspect of the equine industry.

With the high numbers of students comes a need for more space. On UK's Maine Chance Farm, a new teaching pavilion was built to serve students and plans are underway to further enhance the teaching and research facilities on the farm.

## Equine Initiative Highlights, cont.

### HORSE COURSE

The equine science and management program offers a wide variety of major requirements classes. This section offers a glimpse into some of the classes offered.

### Non Equine Related Class: Farm Management, Dr. Steve Isaacs

A class to look for next spring is AEC 302, Farm Management, with Dr. Steve Isaacs. Dr. Isaacs is a professor of extension and teaches this course in the spring. It has provided many students insight into farm management, economic principles, goal setting, risk management and Microsoft Excel principles. Farm Management is also taught in the fall by other professors. The class is offered for four class hours, which includes two days of lecture and offers two lab sections.

"I had Dr. Isaacs' Farm Management last spring. It was one of the best classes I've had at UK. I learned so much that I can apply to many different types of jobs," said Agricultural Education senior Kendra Horn.

Ask your advisor and be on the lookout for Farm Management in the spring!

Another class to look for in the spring deals with all the aspects of Equine Production. Dr. Coleman teaches **ASC 410G, Equine Science** in the spring, Monday and Wednesday, from 8-8:50 a.m. with a Wednesday lab from 1-2:50 p.m. During this class, you will have a chance to learn about everything from pregnancy, including hormones and how to manipulate them; creep feeding; nutrition; the digestive system; what to feed; and other general production topics.

During the lab for this class, students are able to visit a wide range of equine industry facilities to see everything from breeding to conformation. One of the facilities students visited last year was WinStar Farms.

Check out Equine Production with Dr. Coleman to fulfill one of your spring equine class requirements.

### "Inside Horse Racing" photos:

*Top:* Trainer panel, from left to right, included Ron Moquett, Rebecca Maker, Kenny McPeek, John Ward and Carl Nafzger

*Middle:* Attendees look at silent auction items

*Bottom:* Approximately 150 attended

## Around the College of Ag

### UK HORSE RACING CLUB'S FIRST "INSIDE HORSE RACING" FUNDRAISER A HUGE SUCCESS

More than 150 people turned out to hear some of horse racing's top trainers speak at the UK Horse Racing Club's

"Inside Horse Racing: The Trainer's View," held Oct. 8 in the Student Center Grand Ballroom on the UK campus.



The fundraiser featured a panel of influential Thoroughbred trainers, including Ron Moquett, Rebecca Maker, Kenny McPeek, John Ward and Carl Nafzger as well as a silent auction. The event raised more than \$4,000. Proceeds will be shared between the Horse Racing Club and the Makers Mark Secretariat Center.



The mission of the UK Horse Racing Club is to increase awareness among students about horse racing and to create opportunities for students to interact with professionals in the horse racing industry.

Industry sponsors included the Kentucky Thoroughbred Owners & Breeders Association, Juddmonte Farms, The Keeneland Association, Blood-Horse Publications, The Horse Racing Radio Network, Kentucky Equine Education Program (KEEP), Overbrook Farms, Thoroughbred Times and Vinery Farm.



## Around the College of Ag, cont.

### UK EQUESTRIAN TEAM'S SEASON OFF TO A SOLID START

The UK Equestrian team began its season Sept. 29-30, 2007, winning High Point Team at the Midway College hosted show. Numerous riders received top honors in their classes, pulling the UK Equestrian Team far ahead of its competition for both the hunt and stock seat teams on both days.

During its Nov. 3-4, 2007, show at Morehead State University, the hunt seat team won high point team both days while the stock seat team won reserve high point team on Nov. 3.

Upcoming shows for the UK Equestrian Team will be held in February, dates to be announced. One show will be hosted by UK and the other will be held at Morehead State University. More details coming soon.

### PRE-VET DAY NOV. 10

The Pre-Vet Club and the College of Agriculture are featuring Pre-Vet Day on Saturday, Nov. 10, 2007. To see a tentative schedule or to register for Pre-Vet Day, please visit [www.ca.uky.edu/students/prospective/Pre-VetDay.asp](http://www.ca.uky.edu/students/prospective/Pre-VetDay.asp).

### REGISTRATION

Registration for the Spring 2008 semester started on Nov. 2 and will last until Nov. 17. Be sure to check when you can register for your classes.

## Student Spotlight

### EQUINE SCIENCE AND MANAGEMENT FRESHMAN WINS THIRD TENNESSEE WALKING HORSE NATIONAL CHAMPIONSHIP

Dalia Smith, an 18-year-old freshman equine science and management major from Manchester, Ky., took top honors this past August in the 15-17 age division at the Tennessee Walk-



PHOTO : Cutline: Dalia Smith and Pushin That Jazz after winning a third consecutive championship at the Tennessee Walking Horse National Celebration.

ing Horse National Celebration in Shelbyville, Tenn.

The championship is her third consecutive win at the national level. For the past two years she won on a horse named Pushin That Jazz. In 2005, her ride was John FK's Diamond Delight.

Smith says, "My love for the Tennessee Walking Horse has definitely grown with age. The older I get, the more I want to know about how to train them and understand better methods to do so."

She says her favorite thing about college so far is that she knows it is going to help better prepare her for a career in the industry she loves.

Dalia says she intends to continue showing Tennessee Walking Horses well into her future. As an equine science major she hopes to use her degree to better the Tennessee Walking Horse industry and help make it a more popular breed worldwide.

She says she can accomplish anything with her heroes – mom and dad – by her side.

## Grad Student Forum

The College of Agriculture's Equine Initiative at UK includes an exciting branch of Master and Doctorate-level research in equine related topics, including equine economics, land management and animal & vet science. Graduate students are encouraged to post summaries of their research interests at [www.UnbridledNews.com](http://www.UnbridledNews.com), an online community for equine research, business, and related topics. The goal is to create an online graduate student equine research organization where students, faculty, and the equine industry can learn more about equine-related graduate work. The news forum is hosted by the chair of this new organization, Kimberly Brown ([kimberly.brown@uky.edu](mailto:kimberly.brown@uky.edu)).



## Opportunities for Jobs and Scholarships

### SCHOLARSHIPS:

Thanksgiving and winter break are right around the corner. With the celebration of the end of finals comes the time to research scholarship and job opportunities for next year. Some opportunities to be keep in mind during the next few weeks:

- American Quarter Horse Foundation Scholarship Deadline is Jan. 1, 2008. To apply for these scholarships you must be a member of AQHA and have put forth effort into the industry and the association. [www.aqha.com/foundation/scholarships/wanttoapply.html](http://www.aqha.com/foundation/scholarships/wanttoapply.html)
- Race For Education: [www.racingscholarships.com/page.php?page=resources](http://www.racingscholarships.com/page.php?page=resources)
- College Of Agriculture: [www.ca.uky.edu/agripedia/testing/AS/academic/uppapp05.pdf](http://www.ca.uky.edu/agripedia/testing/AS/academic/uppapp05.pdf)
- KEEP: [www.horseswork.com/scholarship.htm](http://www.horseswork.com/scholarship.htm)
- KyQHA: [www.kyqha.com/youth/scholarship.pdf](http://www.kyqha.com/youth/scholarship.pdf)
- Kentucky Horse Farm Workers Educational Assistance Fund: [www.horsefarmeducationfund.com/index.htm](http://www.horsefarmeducationfund.com/index.htm)
- Kentucky Horse Council Scholarship: [www.kentuckyhorse.org/scholarships.shtml](http://www.kentuckyhorse.org/scholarships.shtml)

### HELP WANTED CLASSIFIEDS:

Please note, classifieds listed here are not directly affiliated with UK or its equine programs, rather information passed along from equine businesses as an FYI.

**Equestrian Director and Equestrian Assistant wanted** at Camp Kateri (located one-half hour south-east of Gainesville, Fla). This camp is for girls 6-17 years old. Both positions are paid and applications apply to the June–August 2008 timeframe.

Contact: Cynthia Wisner

Outdoor Education Manager  
Girl Scouts of Gateway Council, Inc.  
(904) 291-0648, ext, 102

UK equine student wanted to **care for horses** while owner is away on business trips. Job is at a personal farm in the Man O War/Nicholasville Road area and would range from three to 14 days per month. Experience with Thoroughbreds is preferred but not required.

Contact: Alicia Prister (859)537-0079

## Industry News

The North American Livestock Expo will be held Nov. 3-16 in Louisville, Ky. The North American Rodeo will be held Nov. 8-10. For more information regarding tickets visit [www.livestockexpo.org](http://www.livestockexpo.org).

For some of the latest equine news from the College of Agriculture, please visit the Equine Initiative website news section at [www.ca.uky.edu/equine/press\\_news.html](http://www.ca.uky.edu/equine/press_news.html).

## Suggestion Box

We want to hear from you! What are we missing? What should we change? What would you like to know more about? What information should we feature in an upcoming issue?

Your feedback is important and we welcome your comments! Please email [equineinitiative@email.uky.edu](mailto:equineinitiative@email.uky.edu) and let us know what you think.

## Contact Us

### Equine Initiative

N212 Ag Sciences Building North  
Lexington, KY 40546-0091

Office: (859) 257-2226

Fax: (859) 323-8484

Email:

[equineinitiative@email.uky.edu](mailto:equineinitiative@email.uky.edu)

Web:

[www.ca.uky.edu/equine/](http://www.ca.uky.edu/equine/)

Associate Director for Undergraduate Education in Equine Science and Management: **Dr. Bob Coleman**  
Equine Initiative Communications Director and Editor: **Holly Wiemers**  
Equine Initiative Communications and Editorial Assistant: **Savannah Craddock**  
Equine Initiative Staff Support: **Kevin Hagan**

You can also find us on **Facebook** under the Equine Initiative Group